

WORK.
WORK.
WORK.

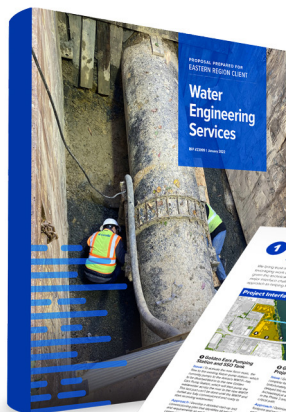
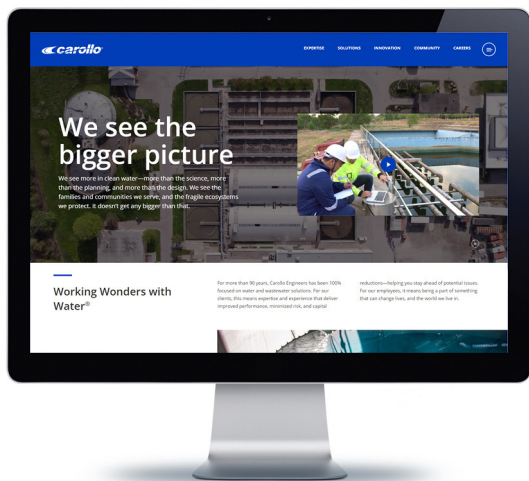


Vince Ewert

Art Direction + Design

Rebrand.

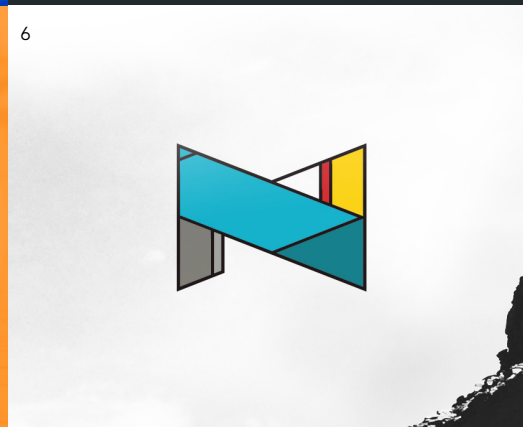
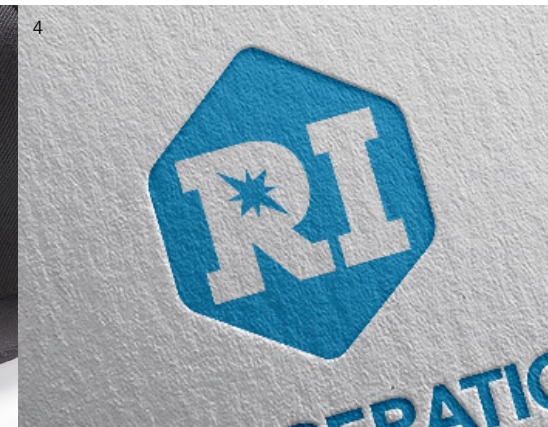
Carollo Engineers rebrand of all materials, including comprehensive visual identity guide



Awards Received from



Identify.



1 Carollo I-Float

2 KMP Strategies

3 Blackhorse Painting

4 Refrigeration Innovation

5 Placerville Canal Street Bicycle Project

6 Navajo Nation AUM Env Response Trust

7 311

8 Monsoon

Info design.

flux THE REAL COST OF VACANCY

\$500 CB estimates that the average vacancy cost equates to upwards of \$500 a day per open position.

330 MILLION HOURS Across the US, across our research suggests that over 330 million working hours could be added every month if businesses were able to more effectively identify employees.

1 in 3 For a significant portion of job offers, finding the right person is expected to take a third of job openings are still active after 3 months.

29 days Average time to fill a job opening across the US. In July 2018, it's the longest average time to recruit and hire a candidate in 15 years.

CORPORATE CULTURE IMPACT There are key positions that need a message to attract and hire the right people. The organization is getting results.

www.flux.com

Flux talent agency infographic

PLANT OVERVIEW
The Tri-City Water Pollution Control Plant utilizes two processes to treat wastewater:

- The **Conventional Activated Sludge** process uses physical, biological and chemical treatment to clean wastewater.
- The **Membrane Bioreactor** process uses physical, membrane and UV technology to clean wastewater.

The two processes run simultaneously, allowing the plant to treat wastewater to a high level while being able to accommodate high flows due to wet weather.

CONVENTIONAL ACTIVATED SLUDGE PROCESS

MEMBRANE BIOREACTOR PROCESS

PROCESS DETAILS

Preliminary Treatment
Influent wastewater passes through bar screens, which remove large debris, like plastics, rags and sticks. Grit sand and other heavy solids settle out in the grit chambers. The screenings and grit are sent to local landfills.

Primary Treatment
Solids settle to the bottom of the primary clarifiers and are removed. Solids that float or skimm from the surface. These solids are pumped to the anaerobic digestion process for treatment.

Aeration Basins
Aerobic microorganisms eat the organic waste materials in the aeration basins.

Clarification/Filtration
The microorganisms are removed from the waste stream by settling in the secondary clarifiers or filtration by the membrane. The microorganisms are removed or returned to aeration basins for further processing. The treated water is sent to disinfection.

Disinfection
Treated water is disinfected with chlorine or ultraviolet light, which inactivates waterborne pathogens. Finally, the treated water called effluent is discharged into the river.

Solids Handling
Microorganisms break down the organic material into biosolids that can be applied to agricultural land as a soil amendment and fertilizer.

MBR treatment produces Class A reclaimed water

The Tri-City plant has treated over 60 million gallons in a single day!
60,000,000 gallons = 1,360,000 bathtubs

Mike by the Numbers

22 years of experience in North America

>20 miles of EPB TBM tunneling in the urban LA area

€20+ Tunnels up to 20 feet in diameter

Experience with TBM intervention, gassy classification, urban settlement risks, fault crossings, EPB, mixed-face conditions

California Licensed Geotechnical Engineer and Professional Engineer

MS, Civil Engineering, University of California at Berkeley

One-pass bolted and gasketed precast concrete segments on ECIS, NGS, Goldline, and Crenshaw tunnels

Water Environment Services Tri-City plant tour brochure

Mass Timber and Clackamas County

Clackamas County is leading Oregon's efforts in the burgeoning advanced timber technology (mass timber) industry with a supply-increasing program that can achieve environmental and economic benefits in our rural communities.

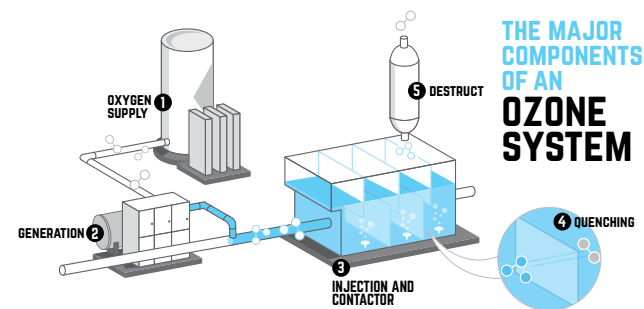
Cross-Laminated Timber is the Next Phase of Mass Timber!

OREGON MANAGED FORESTS → LUMBER MILL → ENGINEERED WOOD PANELS → DESIGN → CONSTRUCTION

LOGGER → FACTORY/MILL WORKER → ARCHITECT → CONSTRUCTION WORKER

CLT products are layered, customized wood panels with enhanced strength. CLT has the potential to create 6,100 direct and 17,300 indirect Oregon jobs by 2032.

Clackamas County cross-laminated timber info sheet



Salem water treatment plant ozone detail illustration

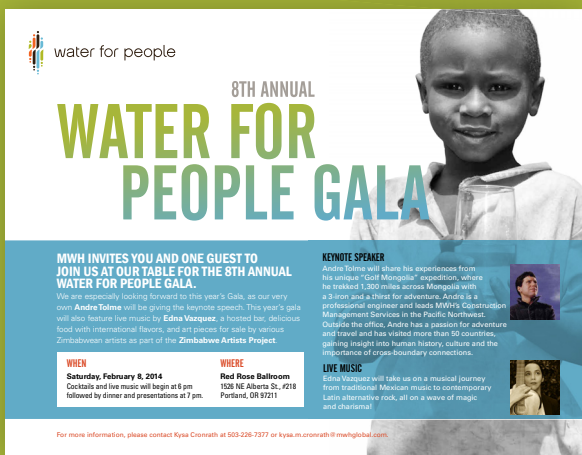
Versatility.



Greater Broadway District improvements brochure



Ford Torino illustration



Water for People Gala invite



Donnie Baseball caricature



Panama Canal Expansion brochure

Sport composite.



Oregon State football social posters



Tualatin HS football sideline pass



West Linn softball poster

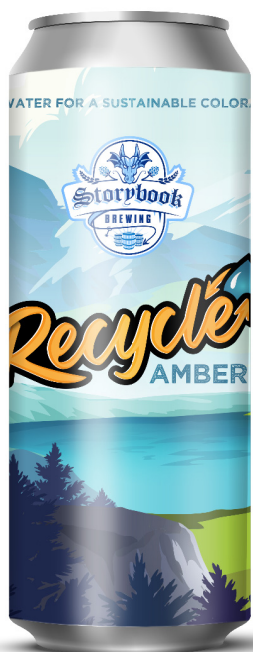


West Linn HS football social media



Mattingly poster

Packaged and displayed.



Storybook Brewing
'Recycle Amber'
beer label



ETD trade show
roll up banner



Blackhorse
Painting
vehicle wrap



Refrigeration Innovation
temp monitor packaging

Worn well.



At Ease Brewing Co. anniversary apparel



Merrell Footwear product catalog



Gualala Reunion gear



NW Torino Club t-shirt



I-Float (Carollo) polo shirt

On the mark.

Seven of my logos have been selected for inclusion in the LogoLounge book series

